

IG DRONES

Enterprise Drone Solutions



© IG DRONES

Delhi | Mumbai | Ahmedabad | Kolkata | Guwahati | Bhubaneswar | Bangalore

NATIONAL FOOTPRINT

01 Corporate HQ
06 Regional Offices



Trusted by PSU's & top industrial leaders





Fully Integrated Drone Solutions

At IG Drones, our goal is always to empower you to deliver the best possible work while cutting costs, saving time, and completing projects more easily. IG Drones were developed with the realities of your job in mind.

Our IG Drones packages combine industry-leading need. UAVs with payloads that were specifically designed for industrial applications like surveying, mapping, inspection, construction, mining, volumetrics, and precision agriculture. These packages and kits provide complete solutions that include aircraft, sensors, accessories, custom mounts, and even an Android tablet app that makes it easy to plan, monitor, adjust, and analyse your missions anywhere.

The use of drones and UAV-based platforms in the aerial imaging market is increasing rapidly, and remote sensing is becoming a preferred method for acquiring qualitative aerial data.

IG Drones, a leading provider of aerial imaging solutions, designed a fully integrated and powerful drone solution with IG A100 and IG B500 PRO aerial platforms that expands the operational capabilities of our customers. The new drone solution offers an easy and safe aerial access to challenging areas, a larger surface coverage in a single flight, a higher resolution images and an opportunity to acquire aerial data with a cost effective, and efficient tool.

Unique Features

- 20MP and 42MP aerial cameras
- Smart triggering of the camera by waypoints / fixed distance / fixed time
- Support for mission planning applications (such as IG pro) – for waypoints missions
- Geo-tagging of all images' location and gimbal position
- Dual remote controllers (drone and camera) enable each operator (UAV pilot and camera operator) to focus on their respective mission goals
- Industrial-grade build of the camera and aerial lenses.



IG Format Camera kit - 20 MP or 42 MP cameras with a wide range of lenses. With its small size and weight as low as 1.25 kg, IG cameras are easily integrated into DELTA 100 AND DELTA 200, providing users, for the first time, with the advantages and the high quality of medium format cameras.



IG DELTA 100 and IG DELTA 200 – A flying platform designed for professional aerial photography and industrial applications. The DELTA 200 is easy to set up and ready to use in a short time. Its gimbal provides full control and functionality with solid locks, flexible rotation and direct connection to the flight control system.



IG's new Capture Mobile application – A uniquely designed assisting application for iOS, enabling remote management of the camera. The application allows complete and easy control of the camera via IG's remote control system, with an intuitive and friendly user interface. The application offers diverse operating modes, including:

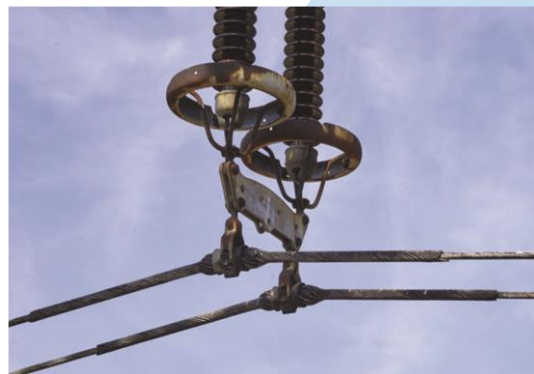
- Video Streaming
- Auto or Manual Capture settings to determine the values of the ISO, shutter speed and aperture
- Auto capture mode to enable image capturing by waypoints, fix distance or by time intervals
- Camera control via IG Lightbridge 2 dials

Complete Visibility Across Dynamic Environments

Powerline Monitoring

Power line inspection using drones is taking off as the ultimate solution, as it can cover immense portions of surface in each flight and provide accurate visualization of the power line components as well as surrounding objects.

IG drones AI solution enables a faster and more accurate collection of visual information, and allows power companies to focus on fault-finding, effective repairing and strategic constructions and maintenance planning, while minimizing the risks to surveying teams.



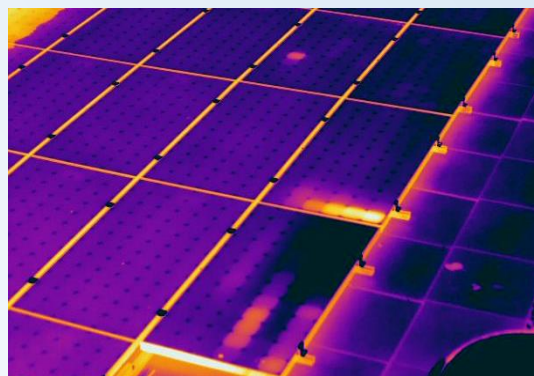
Bridge Inspection

Geospatial products allow for more effective planning, construction, and maintenance of infrastructure projects, including roads and bridges. Effective inspection of aging infrastructure and fast identification of fundamental weaknesses (such as concrete delamination) is crucial, since it effects directly the transportation networks and the safety of public users.

IG Drones platform provides an advance tool for roads and bridges monitoring that helps executing such projects in shorter time, with minimal risk for people or disruption for traffic flow

Solar Panel Inspection

Our key objective is to identify the faulty Solar Panels so they can be replaced by the manufacturers while they are in warranty, maximize output/efficiency and proactively addressing issues thus minimizing maintenance cost. We leverage drone Thermal Imaging and Aerial Inspections to provide accurate and detailed inspections quicker and more cost effectively.



Pipeline Inspection

Pipeline infrastructures must be constantly monitored due to the potential threat to lives and economic losses. The Oil & Gas companies' demand for a reliable and rugged inspection tool is fully addressed by IG's drones solution, which provides maximum coverage and operational flexibility to operators. It enables fast assessment of the pipes' condition, precise identification of erosion, exposed pipes, vegetation overgrowth and much more, and helps decision makers with prioritizing maintenance and repair mission.



Road Inspection

Road Construction Monitoring using IG Drones are more effective construction and maintenance of infrastructure projects including road and bridges are allowed by Geospatial products. Since effective inspection is effects directly the transportation network and safety of public so fast identification of fundamental weaknesses is crucial. Highway Corridor Mapping Makes easy for: -Road defect detection such as potholes and cracks, Alignment of Divider, Over line structures, Boundaries, Electric lines for Street Lights, Expansion of roads, Power lines crossings.



Railway Inspection

One of the major problems that railroads have faced since the earliest days is the prevention of failures in track. There is a significant number of potential problems possible and the task of inspecting the thousands of miles of track stretching across the land has to be performed with speed to avoid traffic interference.

We offer a platform that enables predictive maintenance that not only reduces the costs and the risky operations of ground teams, but also increases the speed and precision of data collection.



Mine Survey

We provide accurate deliverables with our long withstanding performance UAV. Our UAVs effectively collect accurate data from an entire open pit operation and generate client specific deliverables including progress monitoring, mapping data of an entire mining site, and measurement of extraction volumes. We can also provide the aerial solution for mining industries. IG Drones can effectively customise the technology to provide the best outcome for your project.



Industrial Inspection

IG Drones are revolutionizing the inspection industry. By using a drone to collect visual data on the condition of an asset, drone inspections help inspectors avoid having to place themselves in dangerous situations. IG Drones have a lot of benefits in industrial inspection covering large areas in less time. Automated drones from IG Drones used in oil & gas facilities for security, surveillance, emergency response and infrastructure inspection.



Disaster Management

The use of IG Drones to map disaster areas provides greater advantages in costs and in rapid response times when compared to traditional methods. IG Drones can be deployed quickly, generate high-resolution and 3D mapping, identify hotspot areas that have sustained the most damage and upload the data in real time to coordinate relief efforts, IG Drones have been worn by several aid organizations during natural disasters.



Smart City Survey

IG Drones can accurately relay real-time information which plays an important role in the civil security of cities and provides the civic administration to deploy proactive measures rather than reactive measures – such a decision-making process is a hallmark of a smart city concept. With the need to advance smart city programs quickly, drones offer flexibility, allowing surveyors to map long corridors efficiently at the start of projects and collect in-depth data to aid decision-making at an earlier stage.



River Mapping & Services

Drone imagery processed using structure-from-motion photogrammetry is permitting new approaches for classifying and quantifying river habitat parameters. Remote sensing based methods have long played a role in surveying and monitoring physical river habitat and hydro morphology. IG Drones offers a professional, flexible and precision driven solution that simplifies surveying and mapping processes and provide professionals with unlimited and ultimate aerial data, while saving time and reducing costs and manpower.



Agricultural Survey

IG Drones provide growers, service providers, and ag researchers a fast and efficient way to scout their crops, identify stress, create treatment plans, track plant growth, and much more. Using high-resolution RGB cameras can detect and quantify crop health problems early on. These valuable insights can reduce input costs and boost yield. Periodic capture of calibrated data from professional multispectral sensors offer insights into crop health regardless of illumination changes, giving you the needed data to derive quantitative trends.



Oil & Gas Industry Inspection

Using drones for inspecting oil and gas assets results in higher quality, more consistent, and faster data collection. IG Drones Reports identify potential issues and where they are on your property. When data is collected over time, the resulting operational insights can enable long-term asset management. Overseen by our data scientists, the sensor data is processed by proprietary algorithms that interpret the data.



Wind Turbine Inspection

Wind turbines, often located in remote areas, require millimetre-sized damage spotting in order to detect, react to and repair problems quickly and with minimal influence on the turbine performance or the environment.

Our large area sensors provide a close and detailed look at all turbine parts (including the blades) that can prevent a sudden failure by detecting impending damage and signs of wear in advance and improve maintenance strategies.

Forest & Wildlife Survey

IG Drones assists in tracking illegal activities, monitor animals, count their population, plan reforestation, Wildlife Habitat Mapping, Real Time Monitoring of active fires, poaching activities Monitoring over periodic basis, assessment of growing stock, biomass & increment in forest cover. Drones for forest and wildlife gives us a better tomorrow by assessing forest health, encroachments, tree-felling, forest fires, poaching, status of water bodies, biodiversity protection, and mangrove conservation.





Proven expertise in project management & timely completion of projects



220+ Projects
65+ Industrial Clients



**We are focused
on your mission**

Address

**Second Floor, E-53-54, Block
E, Sector 3, Noida, Delhi NCR
201301**

Contact Us

**Mob: +91-9990500337
+91-6370868100**

Website : www.igdrones.com

Email: info@igdrones.com